

Halspan® Letterplates

PAS24 Compliant TS008 Certified Letterplates



Halspan® Letterplates are stylish, streamlined, secure and suitable for suitable for Non fire rated, 30 and 60 minute doorsets. The ultimate TS008 certified letterplate, designed to both protect and perfect doors, Halspan® letterplates are highly engineered with over 120 different processes in each letterplate, setting them apart from anything else currently on the market.

Compliance with TS008, which sets the enhanced security requirements for letterplates, is a requirement of PAS 24:2022, the updated security standard for doorsets in the UK. As well as key fishing, TS008 also covers preventing unlocking the door through the letterplate, while allowing postal items to pass freely through it.



Fire & Smoke

Tested in Accordance with:

BS EN 1634-1: 2014
BS EN 1634-3: 2004



Product Codes & Specification

Our mix and match solution gives you the freedom to choose which finish you want for the internal and external frame. Whether it is a black inner frame with a white outer frame, or a traditional gold inner flap and gold outer flap, the choice is yours! Choose from six different finishes: chrome, gold anodised, silver anodised, polished silver, black and white.

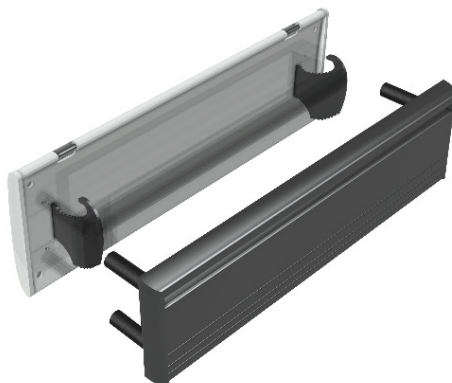
- Designed for 44mm - 70mm composite and timber doors
- Full unrestricted door opening – minimal internal flap projection of only 14mm from the door falls within the end of the door handle meaning the door will open FULLY without the letterplate stopping it doing so
- Aluminium flap construction
- Quick and easy fitting
- Can withstand thousands of openings
- Smooth working mechanism
- No visible fixings
- Anti-Vandal® feature
- Offers maximum protection from key fishing

- Type: TS008 certified
- Internal Letterplate Length: 298mm
- Internal Letterplate Height: 98mm
- Internal Frame Material: Aluminium
- Flap Material: Aluminium & Stainless Steel
- Distance between screw holes: 277mm
- External Letterplate Length: 305mm
- External Letterplate Height: 78mm
- External Letterplate Material: Aluminium
- Cavity Hole Size: 54mm x 260mm

Chrome	Gold	Satin Silver	Polished Silver	Black	White
					

Design Guide

External view



Internal view

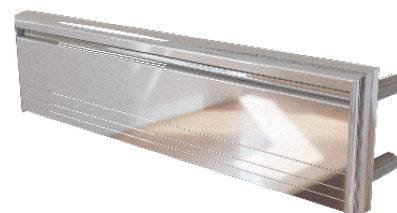


Non Fire Rated


Mix and match which finish you want for the internal and external frame. All NFR External Letterplates are compatible with any NFR Internal Letterplate.

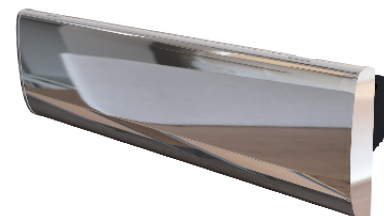
Halspan TS008 Slim External PAS24 NFR

Product Name	Colour	Code
Halspan TS008 Letterplate PAS24 Compliant External NFR	 PVD Gold	LTP-EXT-100-PVDG
	 MPSS Matt Polished Stainless Steel	LTP-EXT-100-MPSS
	 Satin Stainless Steel	LTP-EXT-100-SSS
	 Black	LTP-EXT-100-BLK
	 Anodised Gold	LTP-EXT-100-GLD
	 Polished Silver	LTP-EXT-100-PSL
	 Anodised Silver	LTP-EXT-100-SSL
	 White	LTP-EXT-100-WHT
	 Chrome	LTP-EXT-100-CHR



Halspan TS008 Slim Internal PAS 24 NFR *For use with the above TS008 Slim External PAS24 NFR*




Product Name	Colour	Code
Halspan TS008 Letterplate PAS24 Compliant Internal NFR	 Black	LTP-INT-100-BLK
	 Chrome	LTP-INT-100-CHR
	 Gold	LTP-INT-100-GLD
	 Polished Silver	LTP-INT-100-PSL
	 Satin Silver	LTP-INT-100-SSL
	 White	LTP-INT-100-WHT

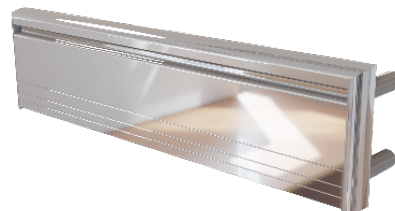


30 & 60 Fire Rated


Mix and match which finish you want for the internal and external frame. Combine any Fire Rated External Letterplate with either a 30 or 60 Rated Internal Letterplate to achieve desired fire rating.

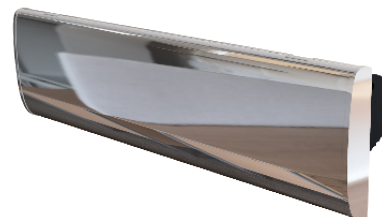
Halspan TS008 Slim External PAS24 Fire Rated

Product Name	Colour	Code
Halspan TS008 Letterplate PAS24 Compliant External FD30/FD60	 PVD Gold	LTP-EXT-101-PVDG
	 MPSS Matt Polished Stainless Steel	LTP-EXT-101-MPSS
	 Satin Stainless Steel	LTP-EXT-101-SSS
	 Black	LTP-EXT-101-BLK
	 Chrome	LTP-EXT-101-CHR
	 Anodised Gold	LTP-EXT-101-GLD
	 Polished Silver	LTP-EXT-101-PSL
	 Anodised Silver	LTP-EXT-101-ASL
	 White	LTP-EXT-101-WHT



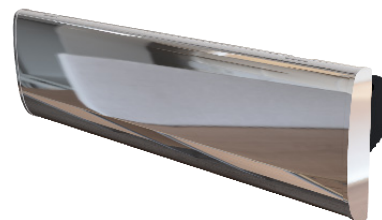
Halspan TS008 Slim Internal PAS24 FD30 *Option for use with TS008 Slim External PAS24 Fire Rated External*

Product Name	Colour	Code
Halspan TS008 Letterplate PAS24 Compliant Internal FD30	 Black	BOM-LTP-X30-BLK
	 Chrome	BOM-LTP-X30-CHR
	 Gold	BOM-LTP-X30-GLD
	 Polished Silver	BOM-LTP-X30-PSL
	 Satin Silver	BOM-LTP-X30-SSL
	 White	BOM-LTP-X30-WHT



Halspan TS008 Slim Internal PAS24 FD60 *Option for use with TS008 Slim External PAS24 Fire Rated External*

Product Name	Colour	Code
Halspan TS008 Letterplate PAS24 Compliant Internal FD60	 Black	BOM-LTP-X60-BLK
	 Chrome	BOM-LTP-X60-CHR
	 Gold	BOM-LTP-X60-GLD
	 Polished Silver	BOM-LTP-X60-PSL
	 Satin Silver	BOM-LTP-X60-SSL
	 White	BOM-LTP-X60-WHT





General Maintenance & Operational Notes

We guarantee that the letterplates will not tarnish on the door for the guarantee period* subject to;

- The letterplates are applied to a door or door panel, and no item of door furniture on the door or door panel are sealed or fixed using any form of silicone sealant or the like.
- The letterplates are fixed correctly and the right way around with the brushes facing to the outside using the correct fixings, and are not scratched or damaged at any time during the installation process or thereafter.
- Nanocoast 304 or 316 grade stainless steel based letterplates are cleaned with a lemon based very mild soap solution and a soft cloth once a month, or every 2 weeks in areas of high sea salt such as coastal areas. At no point should any form of cleaning agents be used.
- Aluminium based letterplates are installed inland (defined as 25 miles from the coast or 5 miles from highly populated industrial areas) and are cleaned monthly with a moist cloth. At no point should any form of cleaning agents be used.
- No claim will be accepted for any letterplate that is scratched or mutilated or fitted incorrectly.
- Aluminium based letterplates are installed inland (defined as 25 miles from the coast or 5 miles from highly populated industrial areas) and are cleaned monthly with a moist cloth. At no point should any form of cleaning agents be used.
- The guarantee only applies if the letterplate is fixed to the original door for which it was bought and fitted by the installer. The guarantee will cease immediately if the letterplate is removed from the original door or door panel.

* Coating Guarantee = the sooner of "the guarantee supplied for the door or window from the manufacturer" or "5 years inland" on aluminium based flap letterplates or "Lifetime" on Nanocoast 304 or 316 grade stainless steel based flap letterplates.

We guarantee that the letterplates will not fail mechanically the door for the guarantee period# subject to the conditions outlined above.

#Mechanical Guarantee = the sooner of "the guarantee supplied for the door or window from the manufacturer" or "5 years inland" on aluminium based flap letterplates or "10 years" on Nanocoast 304 or 316 grade stainless steel based flap letterplates.

The information in this datasheet is correct at time of going to press however our designs, specifications and certifications may change in the interest of product development following publication. If you would like to make a query about any of the details in this document, please contact Halspan via our website, or call our office in the UK on +44 (0)3300 563836.