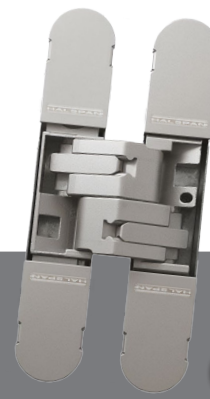




HALSPAN®



Halspan CEAM 1131 3D Adjustable Concealed Hinge

Halspan® CEAM 1131 3D Adjustable Concealed Hinges provide a fully concealed heavy duty hinge for unrebutted, flush faced timber doors. The Halspan CEAM hinge is supplied in attractive colour coded bodies and matching cover caps. Fully certified and backed by our extensive fire test evidence, Halspan CEAM 1131 hinges are suitable for 30 minute and 60 minute fire doors when installed with intumescent pads (supplied). Removable cover caps to conceal fixing screws and adjustment screws.

Fire

Tested in Accordance with:

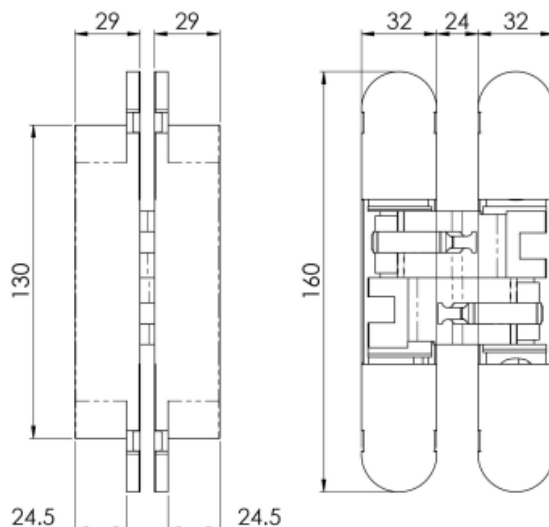
BS EN 1634-1*
*When fitted with approved intumescent

Product Codes & Specification

Specification

- Fire resistant 30 minutes and 60 minutes
- Suitable for doors of minimum 38mm thickness
- Load capacity up to 120 kg
- 10 year mechanical guarantee
- Four hinges per leaf
- Easy Installation and slot symmetry
- Champagne Silver and Nickel Plated finishes available as standard
- Horizontal adjustment from -1.5 mm to +3.5 mm
- Vertical adjustment from -3.0 mm to +3.0 mm
- Depth adjustment from -1.5 mm to +2.5 mm
- Total length 160mm & Depth 29mm

Design Guide



Halspan CEAM 1131 3D Adjustable Concealed Hinge



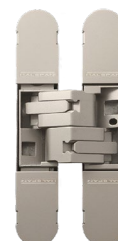
Non Fire Rated Hinges

Product Name Halspan CEAM 111 3D Concealed Hinge No Screws Supplied 160 x 32mm NFR

Master Code	BOM-HIN-300
Colour	Product Codes
● Nickle Plated	BOM-HIN-300-NP
● Champagne Silver	BOM-HIN-300-CH
● Matt Black	BOM-HIN-300-MB
● Bronze Plated	BOM-HIN-300-BP
● Antique Satin Bronze	BOM-HIN-300-ASB
● Silver	BOM-HIN-300-SE
● Galvanic Satin Bronze	BOM-HIN-300-GSB



Nickle Plated (NP)



Champagne Silver (CH)

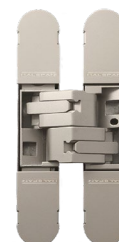
30 and 60 minute Hinges

Product Name Halspan CEAM 111 3D Concealed Hinge No Screws Supplied 160 x 32mm 30/60 Min

Master Code	BOM-HIN-301
Colour	Product Codes
● Nickle Plated	BOM-HIN-301-NP
● Champagne Silver	BOM-HIN-301-CH
● Matt Black	BOM-HIN-301-MB
● Bronze Plated	BOM-HIN-301-BP
● Antique Satin Bronze	BOM-HIN-301-ASB
● Silver	BOM-HIN-301-SE
● Galvanic Satin Bronze	BOM-HIN-301-GSB



Nickle Plated (NP)



Champagne Silver (CH)

General Maintenance & Operational Notes

- Test data is based on a standard 3 hinges fitted to a doorset, as is the most common method of fixing. This is based upon 120kg max. weight door which is tested to 200,000 cycles in accordance with BS EN 1935:2002.
- Fitting configurations may need to be adapted based on door size, door weight and / or door hardware.
- It is recommended that routine maintenance is undertaken on a bi-annual basis. In areas of extreme environment or contaminants, this should be increased accordingly.
- Newly fitted hinges containing ball-bearing races packed with grease may experience a small amount of grease seepage following installation, as excess grease is expelled from the bearing as it beds in. This grease should be wiped from the hinge knuckle using a cloth moistened with white spirit.
- It is also recommended that upon inspection hinges may be lubricated using a fine machine "3 in 1" type oil. Care must be taken not to over-lubricate. Wipe off excess and ensure protection is placed on floor directly under hinges to prevent any overspill to floor surface. It is recommended to lubricate approx every 25,000 cycles.
- All external and exposed surfaces require regular / weekly cleaning with a soft cloth, using warm water and mild detergent to remove built up dirt.
- For persistent stains and marks use a soft cloth, sponge or brush with a small amount of household, detergent-free mild abrasive.
- Surface oxidation can appear as a result of contaminants. It is recommended to clean with a cloth and warm water, before cleaning with stainless steel cleaner.
- After each and every clean, wipe down products with a separate clean dry cloth.
- The use of steel wool and steel brushes can leave particles in surfaces leading to rust, and should therefore be avoided.
- It is recommended that routine cleaning is undertaken on a monthly basis. In areas of extreme environment or contaminants, this should be increased accordingly.
- As a prerequisite of compliance, it is recommended to keep a log of the adopted maintenance schedule for each installation.

The information in this datasheet is correct at time of going to press however our designs, specifications and certifications may change in the interest of product development following publication. If you would like to make a query about any of the details in this document, please contact Halspan via our website, or call our office in the UK on +44 (0)3300 563836.

