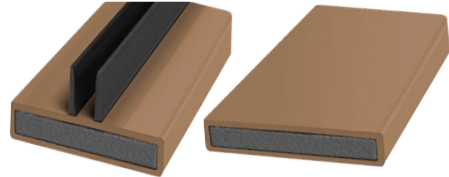




HALSPAN



Halspan R90 Utility Kit

Seal Kit for 90 Minute Timber Door Assemblies

Halspan R90 Seals have been fully tested to BS 476: Part 22: 1987 for performance to 90 minutes fire resistance in the specific application of Halspan Fire Doors in timber frames.

The standard length is 2100mm/1050mm although special lengths can be produced to order. All seals have a self-adhesive backing strip for ease of installation, and are supplied pre-packed with sufficient seals to install 1 Halspan FD90 door assembly.



Fire Rating

Tested in Accordance with:

BS 476: Part 22: 1987

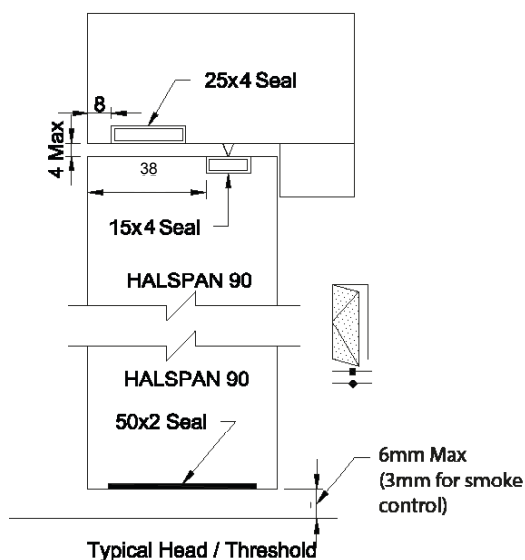
*See notes section overleaf on Smoke Control and further considerations for other relevant test standards



Product Codes & Specification*

Product Codes	SLS-KIT-501		
FD90 Single Utility Kit Components	15mm x 4mm - Blade	25mm x 4mm - Plain	50mm x 2mm - Plain (Seal Only)
Single Component Quantity (2100mm Lengths)	2.5	2.5	0.5

Design Guide



Colours

Halspan R90 seals are available in the following colours:

Brown = SLS-KIT-501-BR
Black = SLS-KIT-501-BK
White = SLS-KIT-501-WH

General Notes

A Note on Smoke Control (from BS 8214: 2016)

The test standards for determining smoke leakage are BS 476-31.1 and BS EN 1634-3. Smoke leakage is essentially the transfer of airborne particles of the products of combustion, and sealing systems are used to restrict this air flow. Seals are used to fill the gaps between the door leaf and the frame. As such, they can have an adverse effect on the operating forces required to use the door if not carefully fitted. Removal of seals to accommodate door hardware increases the leakage rate. Seals that fit in the centre thickness of the door are generally subjected to friction effects detrimental to the durability of the seal and the easy use of the door. Seals applied to the face of the doorstop are unlikely to have a noticeably adverse effect on the forces required to open the door. Doorstop-mounted seals might prevent the door from latching or closing if incorrectly fitted, or when incorporated within a door rebate that has not been designed to accommodate such seals.

Fire doors that are required by the appropriate building regulations to restrict the flow of ambient temperature smoke, identified by the suffix S, e.g. FD30S, FD 30S (BS 476-31) or the suffix Sa, e.g. E 30Sa (BS EN 1634-3), should be fitted with smoke seals. When installed, the threshold gap should, where practicable, be sealed by a (flexible edge) or automatic drop seal, either with a leakage rate not exceeding 3 m³/h per metre at 25 Pa when tested to BS 476-31.1 or BS 1634-3, or just contacting the floor, giving an even contact with the floor but not exhibiting significant increased frictional forces that could interfere with the closing action of the door.

Halspan strongly recommend the use of our SLS-DRP range of automatic drop seals and SLS-TRI triple fin seals to ensure compliance on smoke rated doorsets.

Supporting Test Data

R90 Utility Kit: Chilt A05151 & WYC406902-01